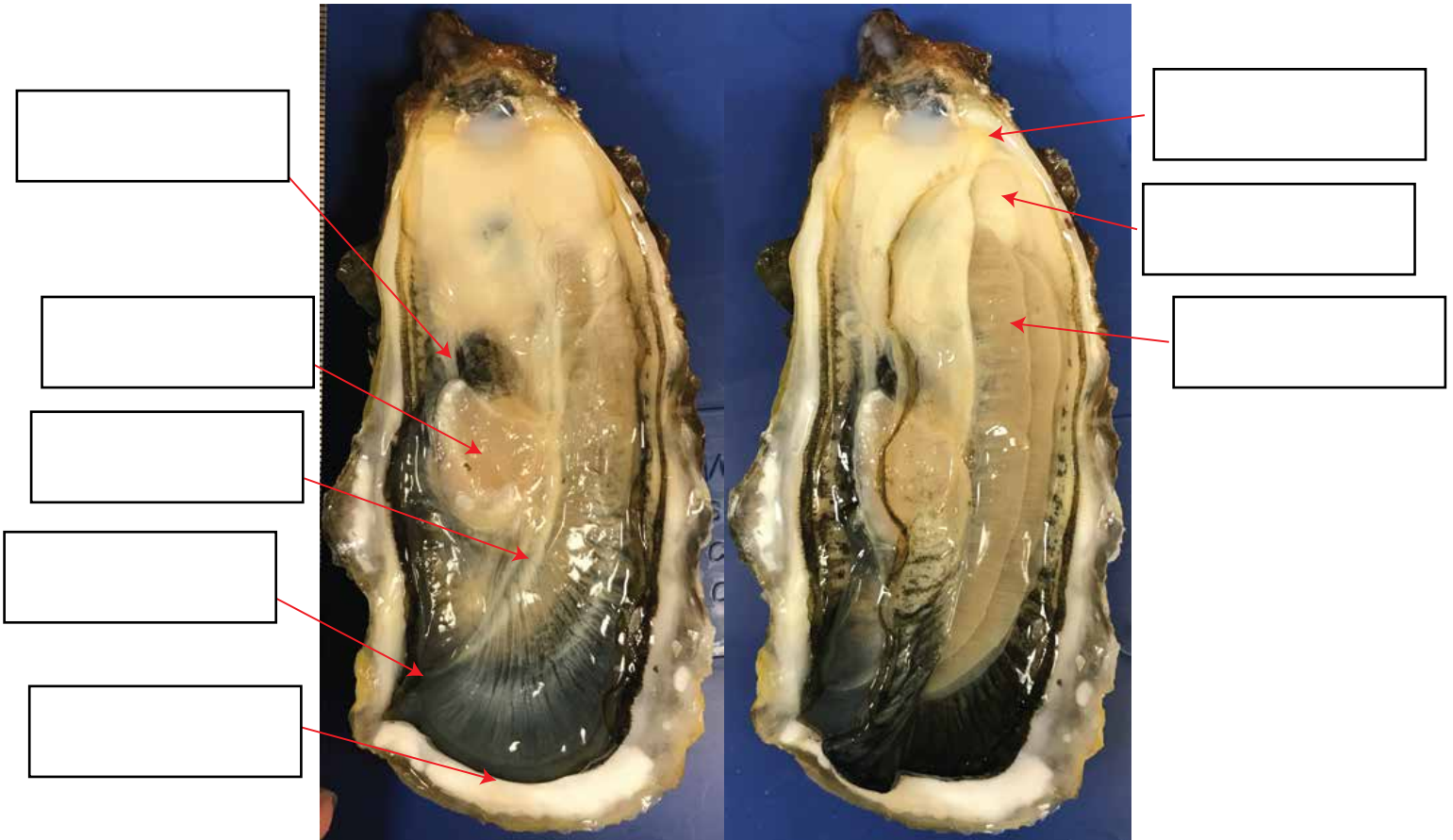


Oyster Dissection Match Game

Procedure:

Once you receive an oyster, use your tweezers, or have a buddy help you find each of the following parts of the oyster. Then match each term to its function.



- a. Adductor Muscle
- b. Mantle Edge
- c. Mouth
- d. Gills
- e. Heart
- f. Stomach
- g. Intestine
- h. Anus

- ___ . Takes in food and other small particles for digestion
- ___ . Absorbs nutrients digested in the stomach.
- ___ . Area where oysters grow their shell.
- ___ . Allows the oyster to breath. Takes oxygen out of the water.
- ___ . Location where solid waste leaves the body.
- ___ . Responsible for closing the oyster shell. Keeps the shell tightly closed when tides are low, or predators are near.
- ___ . Circulates blood through the body.
- ___ . Digests food.